



**NATIONAL LEVEL SCIENCE TALENT SEARCH EXAMINATION**

**CLASS - 3**  
**Question Paper Code : 1P204**

**KEY**

1. B	2. B	3. A	4. A	5. A	6. B	7. B	8. C	9. C	10. A
11. A	12. B	13. D	14. C	15. B	16. D	17. B	18. A	19. D	20. B
21. C	22. D	23. B	24. D	25. B	26. D	27. C	28. D	29. D	30. A
31. D	32. A	33. B	34. A	35. D	36. B	37. B	38. D	39. B	40. B
41. C	42. B	43. D	44. C	45. B	46. B	47. C	48. B	49. D	50. C
51. A	52. A	53. B	54. D	55. B	56. A	57. C	58. C	59. C	60. D

**SOLUTIONS**

**MATHEMATICS**

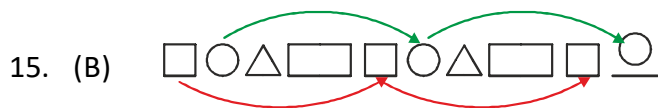
01. (B) It would be 40 bigger.
02. (B) AB and DC are not perpendicular.
03. (A) In total, Luke received Rs. 20 + Rs. 22 = Rs. 42 for selling the retro game cartridge. However, he spent a total of Rs. 12 + Rs. 24 = Rs. 36 buying the retro game cartridge. Thus, he made Rs. 42 – Rs. 36 = Rs. 6 in the end.
04. (A) Figure 1 and 2 are the same coloured portion.

05. (A) 
$$\begin{array}{r} 104 \\ -97 \\ \hline 7 \end{array}$$
  
 $\star = 9$  ;  $\text{😊} = 7$   
 $9 + 7 = 16$
06. (B) Centimeters & Meter are units for the length of chop sticks & carpet respectively.
07. (B) 1 dog < 12 kg  
 2 dgs > 20 kg  
 1 dog = 11 kg (i.e., < 12 kg)  
 2 dogs = 22 kg (i.e., > 20 kg)

08. (C) Total pieces = Number of pieces  $\times$  number of cuts per piece  
 $= 4 \times 3 = 12$

So, Meena cut the pizza into a total of 12 equally big pieces.

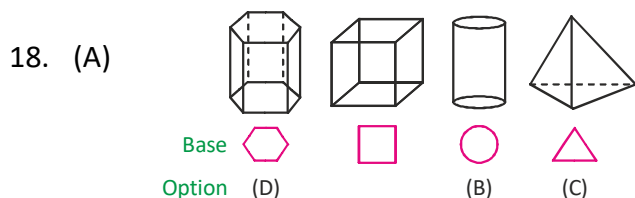
09. (C) Actual sum =  $513 + 467 = 980$   
 Estimated sum =  $500 + 500 = 1000$   
 Estimated sum  $>$  Actual sum
10. (A)  $4 \div 2 = 2$
11. (A) 2 years = 24 months  
 24 months + 5 months = 29 months
12. (B)  $1250 \text{ ml} - 750 \text{ ml} = 500 \text{ ml}$
13. (D) Cylinder can roll and slide, it has 2 edges and it has flat and curved surfaces.
14. (C) When you divide by a fraction, its the same as multiplying by the reciprocal of that fraction.
- $$\frac{3}{8} \div 5 = \frac{3}{8} \times \frac{1}{5}$$



16. (D) The height of 2 men is  $170 \text{ cm} + 170 \text{ cm} = 340 \text{ cm}$ . When one stands on another's shoulders, the height is 320 cm, so the difference is  $340 - 320 = 20 \text{ cm}$ . Therefore, 5 man human tower is  $5 \times 170 - 4 \times 20 = 850 - 80 = 770 \text{ cm}$ .

17. (B)

$$\begin{array}{r} \overset{1}{5} \ \overset{1}{9} \ \overset{1}{8} \ 4 \\ + 1 \ 2 \ 5 \ 0 \\ \hline 7 \ 2 \ 3 \ 4 \end{array} \qquad \begin{array}{r} \overset{6}{7} \ \overset{11}{2} \ \overset{12}{3} \ 4 \\ - 2 \ 6 \ 3 \ 5 \\ \hline 4 \ 5 \ 9 \ 9 \end{array}$$



19. (D) By trial and error method, we find that the number of student is 8 and the cost is  $15(8) + 10 = \text{Rs. } 130$ .

20. (B)  $16 + 9 = 9 + 16 = 25$   
 $9 \div 3 \neq 3 \div 9$   
 $7 \times 3 = 3 \times 7 = 21$   
 $(4 + 11 + 5) = (5 + 4 + 11) = 20$   
 $9 \div 3$  and  $3 \div 9$  gives two different options
21. (C)  $2:15 \text{ p.m.} + 1 \text{ hr } 45 \text{ minutes} = 4:00 \text{ p.m.}$
22. (D) In option (D) Tom start with 5 apples and then gives away 3, which involves taking away a quantity from the original amount. This is an example of subtraction.
23. (B) The largest 2-digit number is 99 and lagest 1-digit number is 9, multiplying these gives  $99 \times 9 = 891$ , which has 3 digits. Therefore, the maximum number of digits in the product is 3.
24. (D)  $C = 45000 \text{ kg}$   
 $B = 45000 \text{ kg} + 7500 \text{ kg} = 52500 \text{ kg}$   
 $A = 52500 \text{ kg} + 12000 \text{ kg} = 64500 \text{ kg}$
25. (B) Proper fraction is a fraction where the numerator is smaller than the denominator and the value is less than 1.

### GENERAL SCIENCE

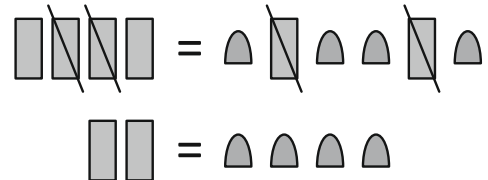
26. (D) Trees has a hard woody stem with bark.
27. (C) Green bean seedling get its food from seed leaves or cotyledons.
28. (D) Chicken is an omnivore that feed both on plants and animals.
29. (D) The traffic sign shown below indicate no parking.
30. (A) Grasshoppers and cockroaches breathe through their air holes.
31. (D) Children in option (D) crossing the road at zebra crossing are obeying safety rules.
32. (A) Reproduction is common to all living things.
33. (B) Heat changes solids to liquids and liquid to gases.
34. (A) 'X' is seed.
35. (D) A basic need of both plant and animals is water

36. (B) Blood carries oxygen to all parts of the body.
37. (B) Flowers produce seeds.
38. (D) The earth takes one year to complete one path around the sun.
39. (B) The beak of the duck helps to scoop up small fish for food.
40. (B) A wet towel becomes dry due to evaporation.
41. (C) If there is a break in bone it is called fracture.
42. (B) Egg is a body building food. It is rich in proteins. It helps to build our muscles strong.
43. (D) Koel lays its eggs in crow's nest.
44. (C) Cow chew the cud, Rat gnaw the food and Wolf tear the flesh.
45. (B) A cow that eats grass is a herbivore.
46. (B) Steam is in gaseous state.
47. (C) Only birds have beak and feathers.
48. (B) Fish breathe through their gills.
49. (D) Heart pumps blood.
50. (C) Moon is the natural satellite of earth. It appears to change its form. Neil Armstrong was the first man to step on it.
51. (A) Eagle have strong, sharp and hooked beak.
52. (A) Oxygen is essential for animals to live.
53. (B) A plant has roots to absorb water from the soil and it can make food.

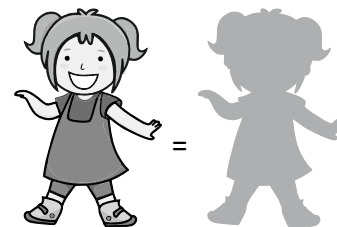
54. (D) By the action of the Sun the wind and the rain rocks are broken into smaller pieces.
55. (B) Water can exist on Earth in the solid (ice, snow, iceberg, etc), liquid (top water, rain water, seawater, etc) and gaseous states (water vapour and steam).

**CRITICAL THINKING**

56. (A) From statement 2, we get



57. (C) Every time alternate arrows turn 180 degrees in clockwise direction.
58. (C) Since Ajay ranked 9th from the top there are 8 students ahead of him. And he ranked 38th from the bottom that means 37 students are behind him. So the total number of students will be  $8 + \text{Ajay} + 37 = 46$ .



59. (C)
60. (D) E/5

---

*The End*

---